

# GONE FISHIN,



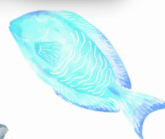
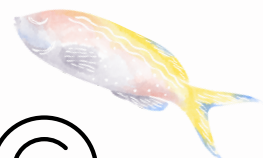
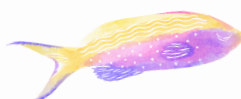
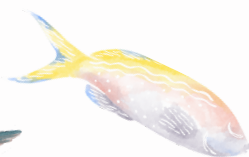
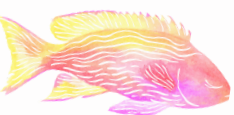
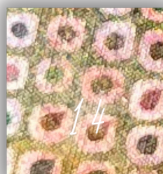
Size 17x23

[WWW.BACKDOORGENERALSTORE.COM](http://WWW.BACKDOORGENERALSTORE.COM)



# GONE FISHIN.

1. Outer Border & Binding- Island Batiks SH05-121824470 1/2 yd
2. Inner Border- 839 Splash 1/8 yd
3. Background/sky 1895-120 Hyacinth 1/3 yard
4. Mountains 2 & 3 - Water- 851- 653 Agave 1/3 yd
5. Mountain 1- 885-535 Purple Haze 1/8 yd or 4 1/2 x 8"
6. Grass- Banyan 81600-74 or Print Green/purple 6" strip or 5 x 12"
7. Bears & noses- 1895-537 Blacklight 1/8 yd
8. Goat- U2475-531 Papyrus 1/8 yd or
9. Moose 1895-308 Mink
10. Huckleberry Leaves Border 1895-69 Jungle 1/8yd or 4 1/2x11"
11. Huckleberry Leaves in grass 1895-141 Pine 1/8yd or 4 1/2x11"
12. Huckleberries 1895-358 Vegas 1/8 yd or 4 1/2x7"
13. 885 dots - scraps for 3 fish 1 1/2 x 2" for each fish
14. Backpack 3x4"
15. Bedroll and frame 3x4"
16. Muzzles 2x2" scrap medium brown
17. Fishing Pole & Muzzle 1x10" medium brown



**Background:** Cut 11 x 17 " set aside.

**Inner Border**

Cut 2-1 1/4" x 17" for side borders

Cut 2- 1 1/4" x 12 1/2 " for top and bottom borders

**Outer Border**

Cut 2- 2 1/2 x 18 1/2" (sides) and 2- 2 1/2 x 16 1/2" (top and bottom)

**Binding-** Cut 2 strips 2 1/4" x WOF, this is a narrow binding

All seam allowances are 1/4" unless noted

**Fusible Appliqué**

Press all fabrics first. Trace and label all shapes onto paper side of fusible webbing using a pencil. Cut out tracings 1/8" to 1/4" away from tracing using paper scissors.

\*Mountain 3 to be places on the gradient fabric with mountains in the purple going down to teal for the water.

Match corresponding fabrics to tracings. Lay the tracings fusing side down onto the wrong side of the fabric. Press per fusible directions. Let cool and then cut each piece out along the tracing lines.

Group shapes for assembly- bear pieces, baby bear, huckleberry bushes, & huckleberry bushes for border.

**3D Fish**-The easiest way to make the 3D Fish is to trace fish on to freezer paper. Fuse 2 layers of fabric wrong sides together and let cool. Iron the freezer paper onto the fabric and cut out shape. Repeat with each fish and fabric. Set aside for embellishing

**Assembly-** *take the paper off of the pieces as you position into place*

1. Position Mountain 1-3 in place onto the background.
2. Align the Grass at the bottom of the quilt and place Assembled Bear & Huckleberry Branches/ Huckleberries and press down.
3. Add borders at this time beginning with the inner side borders, then top/bottom borders then outer borders, sides first then top & bottom last.
4. Postion the Moose, Bears, Goat and Huckleberries in place.

Lay pressing sheet over the finished layout. Lay pieces fusing side down onto the pressing sheet in order. Once the pieces are in place, fuse with an iron according to fusing directions. See heat and duration on fusible webbing instructions.

Position in place according to the Layout. Notice the fishing pole goes down before the bear.

## Quilting your project

Layer the finished top, batting and backing. 505 Spray is great for small projects like this and then use a few safety pins to keep in place. Use free-motion quilting along the edge of your shapes to give them definition and permanence. You can use monofilament or matching thread.

## Trim and Bind.

## Embellish

Using a darning needle or your choice, thread needle with enclosed embroidery thread for the fishing line. The line is anchored at the bear paw, top of the pole and at each fish.

### Diagram for Quit Layout

